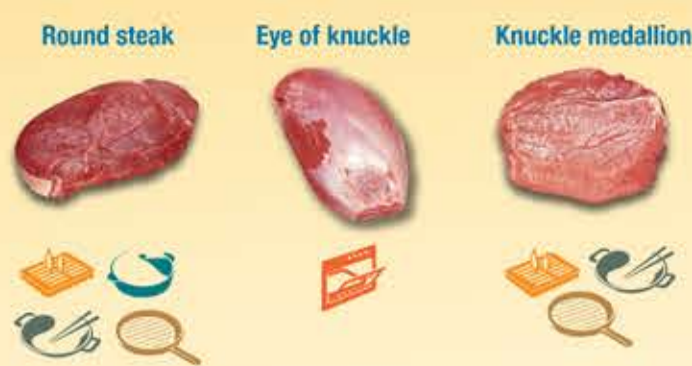


# Australian **beef** & **lamb** cuts

## 1 Beef Shin



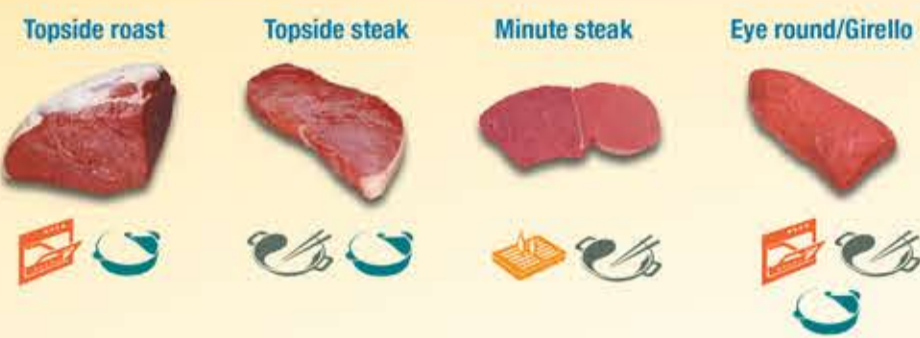
## 3 Beef Knuckle



## 1 Lamb Leg



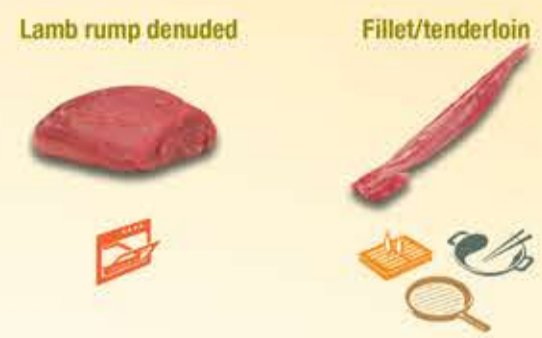
## 2 Beef Silverside/Topside



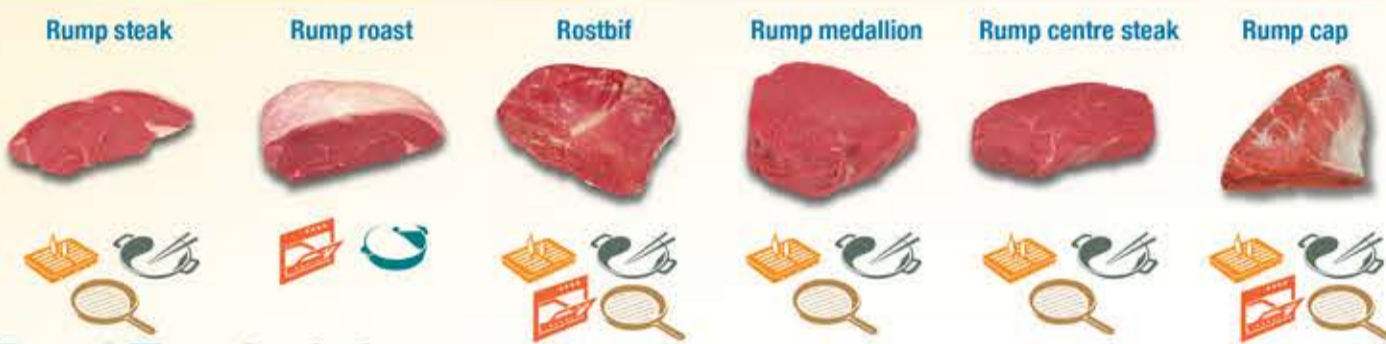
## 2 Lamb Chump



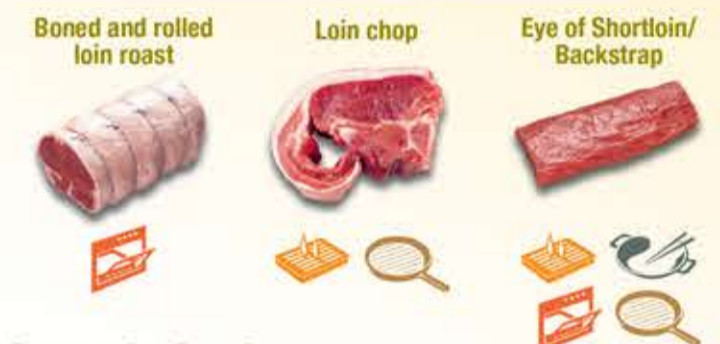
## 3 Lamb Tenderloin



## 4 Beef Rump



## 4 Lamb Shortloin



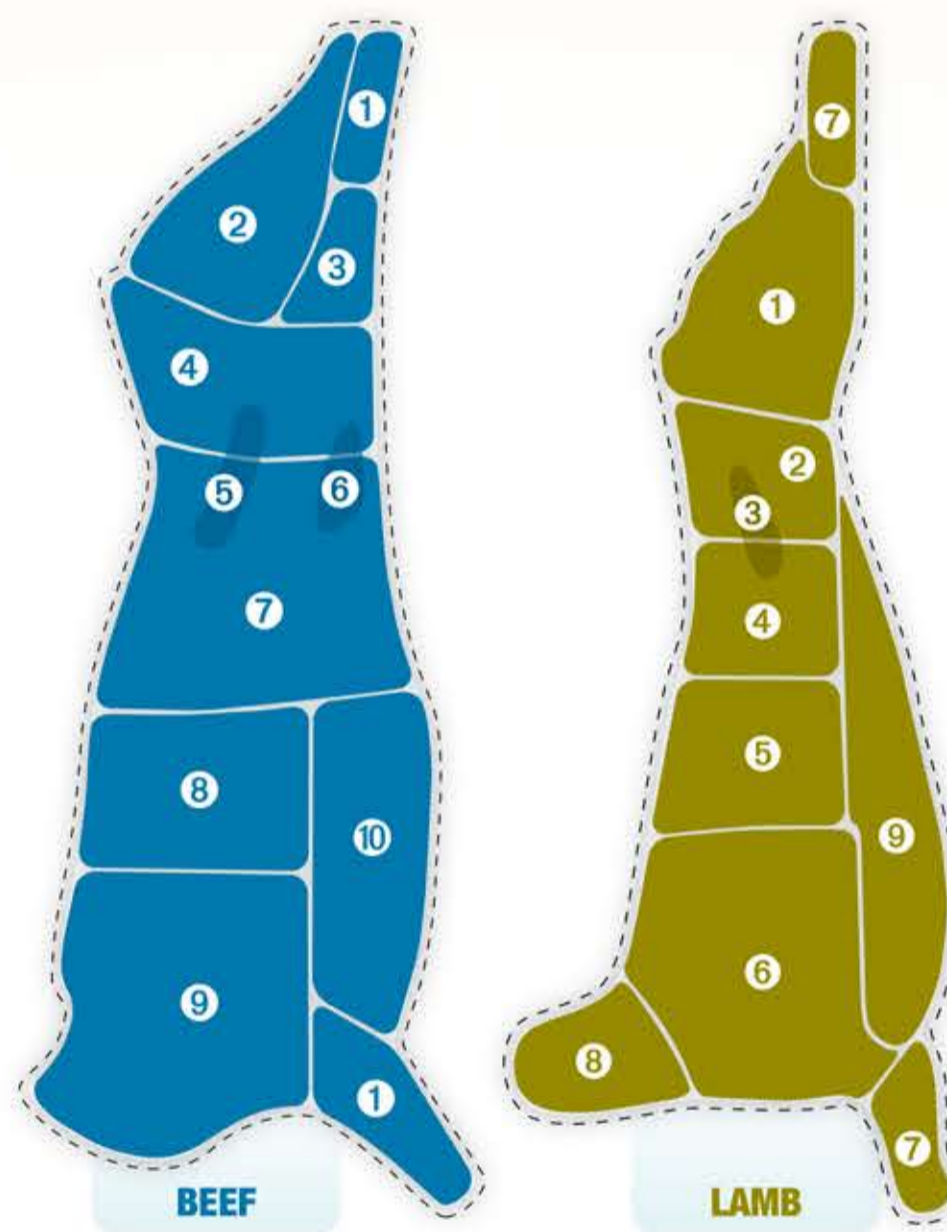
## 5 Beef Tenderloin



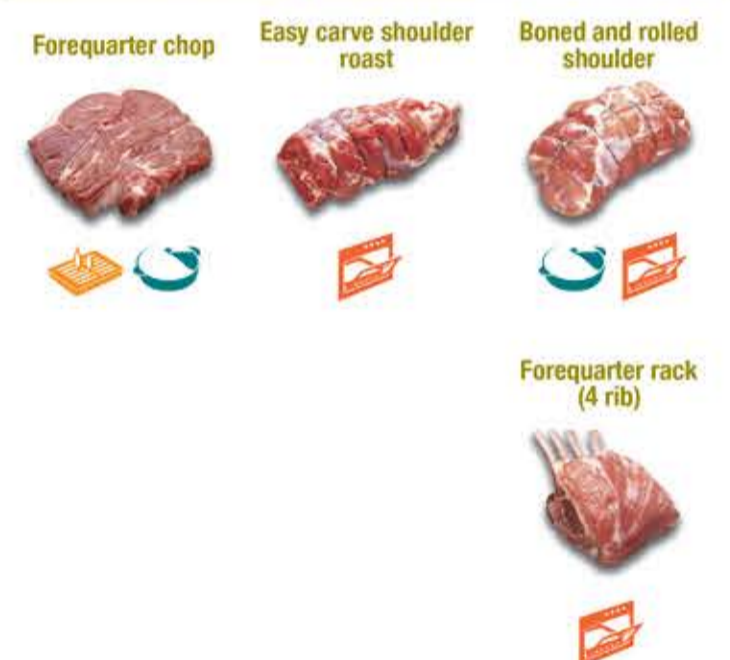
## 5 Lamb Loin



## 6 Flank Steak



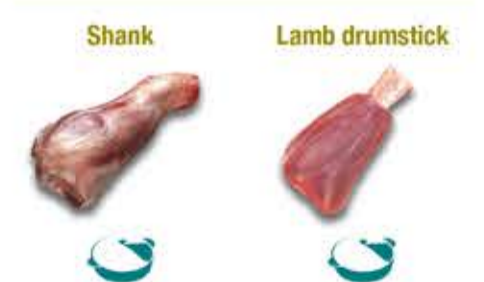
## 6 Lamb Forequarter



## 7 Beef Striploin



## 7 Lamb Shank



## 8 Beef Cube Roll

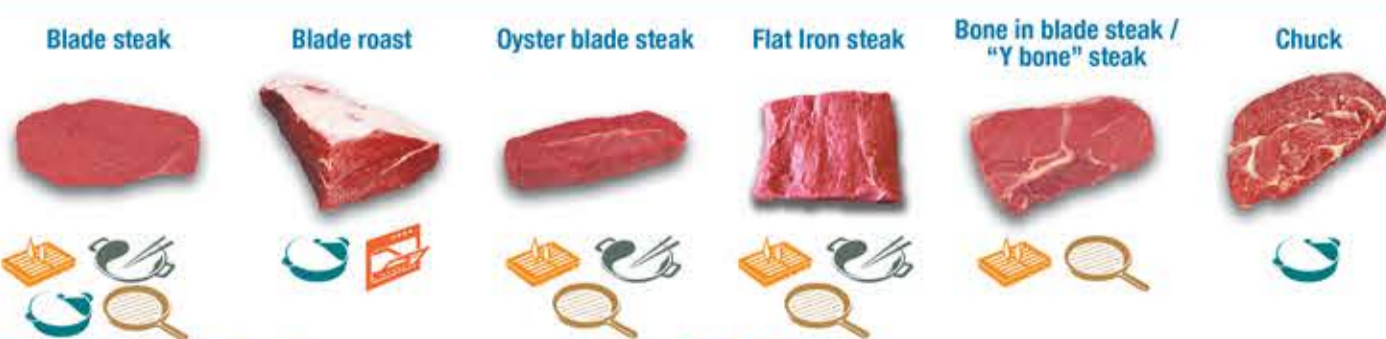


### LEGEND



[themainmeal.com.au](http://themainmeal.com.au)

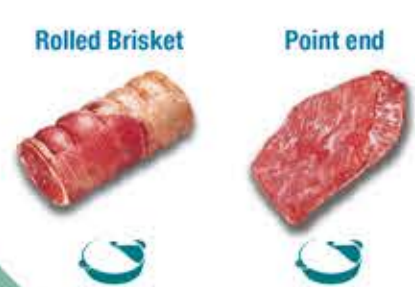
## 9 Beef Blade/Chuck



## 8 Lamb Neck



## 10 Beef Brisket



## 11 Beef Other



## 9 Lamb Ribs



## 10 Lamb Other

